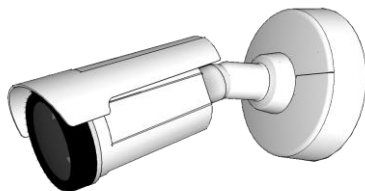


Your Ace-Card in your hand

To know what the best match is for you, here are some of the most important features in CCTV systems:

1. Camera body shape:



Bullet shape

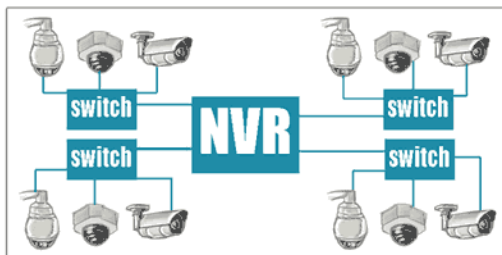
- Good for **Outdoor**
- Weather proof
- Metal body (shock proof)
- Night-vision (Infra-Red)
- Easy to mount on specific direction
- Good illustration (showing others that you are equipped with security)



Dome shape

- Good for **Indoor**
- Plastic body
- Night-vision(IR) (not all models)
- Harder to mount on a specific direction
- Less illustration (harder to see by others)

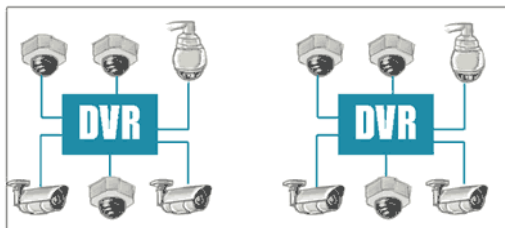
2. Connectivity system: **IP**, **Analog**:



IP system:

Every device is counted as an **individual member** which can act individually. May belong to one or more network.

- Very good quality
- Highest technology
- Universal standards (every device can apart from the brand can work in the network)
- Progressive and moving forward system
- Can work together no matter if old or new (may add any device later)
- Long-term positive investment

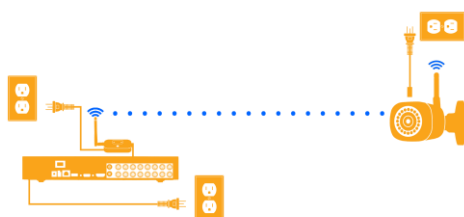


Analog system:

Every device is counted as an **dependant** part which **cannot** act individually. Should be on **only one** circle and attached to DVR

- Good quality
- Old technology
- Individual factory standards (each factory production can work with its own standards)
- May not work if one or more parts are old
- Somehow cheap price in the beginning

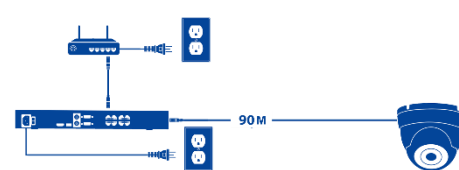
3. **Wired or wireless** (Only in IP camera which is named **WIFI**):



Wireless (WIFI):

- Higher initial cost
- Lower labour fee

Cost effective on **3 or more** cameras

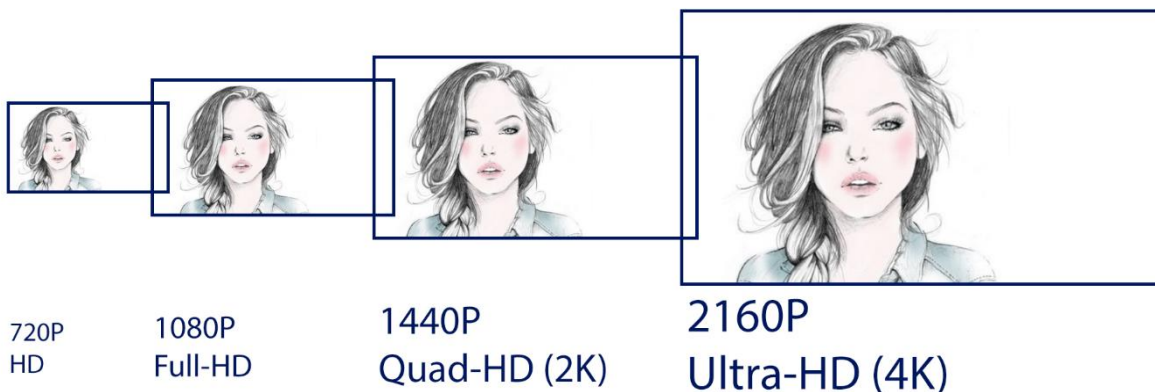


Wire:

- Lower initial cost
- Higher labour fee

Cost effective on **2 or less** cameras

4. **Resolution:**



In the next page, you'll see the difference of resolution when they zoom to explore more details.

Here is the difference between resolutions:



This will be shown even more when you zoom in for more details.

5. Night vision:

To see clear at night (even without any source of light, most cameras are equipped with IR (Infra-Red) lights enables the camera to produce its hidden light source to see clear (and black and white) at nights.



6. Waterproof, Weather proof and Vandal proof:

Have a resistance against water splash (like rain or storm) or against high or low temperature, Also, have the ability to resist the hit or vandal by body shape or material are very important features to consider.



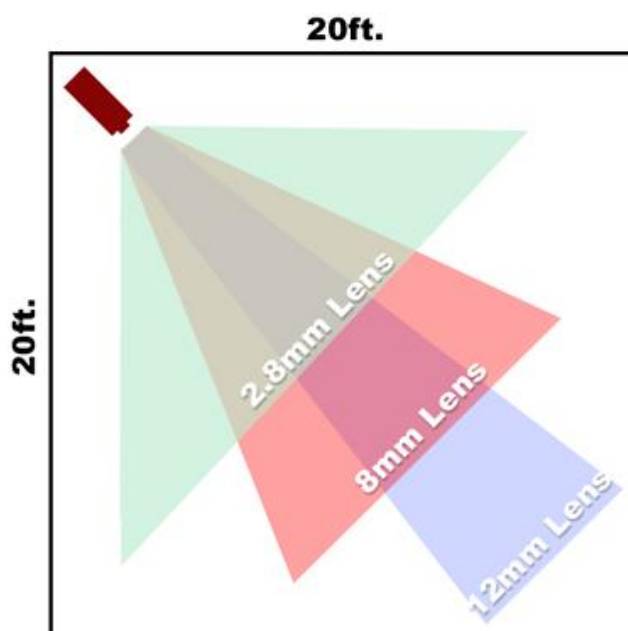
7. Lens and angle of view:

Cut the long story short:

More zoom (the higher focal number e.g.12mm) means the narrower angle of view and the more details in target area;

Less zoom (the lower focal number e.g. 2.8mm) means the wider angle of view and the fewer details in the far distance (target area).

The height of installation: the best height for installing a camera is 2.8m to 3.4m to capture the most effective and useful image.



Best estimation is realizing your need and requirements and ask for someone who is capable of do all the calculation to find your best match. Solving the equation between price, need and serviceability.

8. Smartphone application:

With NVR or DVR connected to internet, it is possible to see the **live stream** or **Review** the recorded footage remotely.

In some devices a static IP required, others work with P2P technology (with dynamic IP).

